

Caracteristici specifice

- Mecanism numerator sigilat ermetic(IP 67)
- Mecanismul numerator sigilat poate fi rotit complet 360°
- Pot fi montate pina la 3 tipuri de contacte REED fara a rupe sigiliul contorului
- Protectie maxima impotriva coroziunii oferita de mantaua pentru praf
- Nu este afectat de campurile magnetice exterioare
- Elemente de masurare interschimbabile
- Performante specifice superioare clasei de precizie B

Aplicatii

Masurarea de debite inalte si relative constante in conducte pentru distante mari

Marcaje aprobate

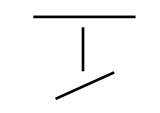
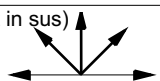
D80

Diametru nominal DN 500

6.132.01

Clasa metrologica B
30 °C

Instalare

Conducta	orizontal vertical inclinat	
Capul contorului	vertical(direct in sus) lateral	

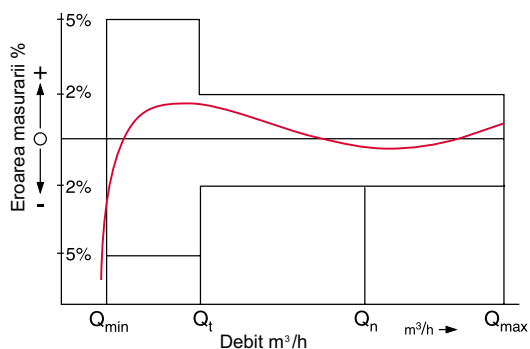
Conditii de instalare

- Tronson de conducta dreapta în amonte de contor: 5 x DN
- Tronson de conducta dreapta în aval de contor: fara restrictii

Tabel de prelucrare a datelor

Diametru.nominal	DN	500	600	700	800
Debit nominal (in conf. cuEEC)	Q_n	1 500	---	---	---
Debit maxim a debitului flow (cateva minute) $\pm 2\%$	Q_{max}	4 500	6 500	9 000	12 000
Debit nominal $\pm 2\%$	Q_n	3 000	3 300	4 500	6 000
Debit de trecere $\pm 2\%$	Q_t	60	180	250	320
Debit minim $\pm 5\%$	Q_{min}	45	100	130	210
Debit de pornire	m^3/h	20	40	50	60

Curba tipica a erorilor



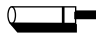
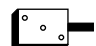
- Q_{max} = debit maxim
 Q_n = debit nominal
 Q_t = debit de trecere $\pm 2\%$
 Q_{min} = debit minim $\pm 5\%$

Pierderi de presiune

DN 500 ... DN 800

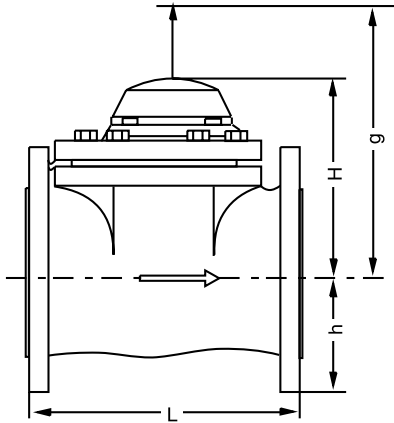
Pierderi de presiune la $Q_{max} < 0,1$ bar

Valorile impulsului

Pulsor		DN 500 ... DN 800 1 impuls $\hat{=}$... m ³
R 01		10 m ³ 100 m ³
OP 01		0.10 m ³

Alte valori de impuls la cerere

Dimensiuni de gabarit



Dimensiuni

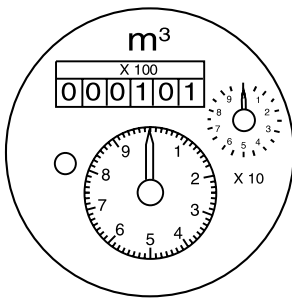
Diametru nominal		DN	500	600	700	800
Debit nominal (in conf. cuEEC)		Q _n	1500	---	---	---
Lungime totala	L	mm	500	500	600	600
Inaltime	H	mm	412	470	520	570
	h	mm	353	420	455	512
	g	mm	860	920	970	1020

Alte lungimi totale la cerere

Greutati

Diametru nominal		DN	500	600	700	800
Debit nominal (in conf. cuEEC)		Q _n	1500	---	---	---
Contor		kg	256	270	260	270
Element de masurare		kg	28	28	28	28
Carcasa		kg	228	242	232	242

Dial



WP QF

Materials

Nominal Diameter	DN 500 and DN 600	DN 700 and DN 800
Body	cast iron	welded steel
Measuring element	plastic	
Rotor	plastic	
We also use the following materials	brass, stainless steel	

WP QF

L B 1200 RO - Pagina 3 / 4



FLUID GROUP HAGEN

Ordonare text

Cantitate:

Mentiuni: WP QF

Diamentru nominal: DN

Marimea contorului: Q_n

Temperatura de funct.: 50 °C

Presiunea de funct.: PN 16

Clasa metrologica: A / B

Lungime totala L: mm

valoare impuls:/.....m

orificiului de fixare in conf. cu DIN 2501, PN 16

garantie: cu/fara

Ordonare exemple

Cantitate: 2

Mentiuni: WP QF

Diamentru nominal: DN 500

Marimea contorului: Q_n 1000

Temperatura de funct.: 50°C

Presiunea de funct.: PN 16

Clasa metrologica: B

Lungime totala L: 500 mm

valoare impuls: 1 / 0.1 m

orificiului de fixare in conf. cu DIN 2501, PN 16

garantie: cu